

Macmillan  
Academy

# **CHILD PROTECTION AND SAFEGUARDING**

## **POLICY DETAILS**

<b>Policy title:</b>	Child Protection and Safeguarding Policy
<b>Staff name and job title:</b>	Amy Tumelty – Assistant Headteacher
<b>Organisation:</b>	Macmillan Academy
<b>Policy version number:</b>	1.7
<b>Approved by Headteacher:</b>	September 2025
<b>Date of next review:</b>	September 2026
<b>Distribution:</b>	Website/Staff Handbook

## **POLICY REVISION AND APPROVAL HISTORY**

<b>Version</b>	<b>Date of review</b>	<b>Date of next review</b>		<b>Approved by</b>
1.2	September 2021	September 2022	Updated	Headteacher
1.3	April 2022	April 2023	Updated	Headteacher
1.4	October 2022	October 2023	Updated with new Designated Safeguarding Lead	Headteacher
1.5	October 2023	October 2024	Annual review/update	Headteacher
1.6	September 2024	September 2025	Annual review/update	Headteacher
1.7	September 2025	September 2026	Annual review/update	Headteacher

## **CONTENTS**

<b><u>SECTION</u></b>	<b><u>PAGE NUMBER</u></b>
1. Safeguarding statement	4
2. Introduction	4-5
3. Equality statement	5-6
4. Legislation and statutory guidance	6
5. Safe school, safe staff	6-8
6. Responsibilities	8
7. Supporting children	9
8. Definitions 9. Confidentiality	9-10
10. Procedures to follow in the case of suspicion and making referrals	10-13
11. Procedures to follow in the case of a disclosure	13-14
12. Prevent strategy	14
13. Physical intervention 14. Anti-bullying 15. Health and safety 16. Monitoring and evaluation	15  16
Addendum 1 – Summary of Changes to KCSIE (September 2025)	17
Addendum 2 – Tees Multi Agency Safer Referral Form	18-21
Addendum 3 – Referral flow charts	22-26
Addendum 4 – Early Help Referral Form	27-30

## 1. SAFEGUARDING STATEMENT

- 1.1 Macmillan Academy follow procedures laid down by Middlesbrough Safeguarding Children Board (MSCB). The Academy have adopted a Safeguarding policy in line with MSCB procedures, this is a whole school/Post 16 approach. At Macmillan Academy the safety and well-being of all members of the academy is paramount. The academy strives to deliver excellence in teaching and learning, aiming to inspire students for future employment. We recognise the wider local community have a full and active role in assisting to protect students from harm. By working in partnership with relevant agencies and parents we endeavour to promote the student's optimum potential and encourage all children to make a positive contribution. Macmillan Academy takes seriously its responsibility under Section 175 of the Education Act 2002 to identify, assess and support those children experiencing difficulties. We encourage any member of the school to seek guidance if they have a concern. Macmillan Academy will listen without judgment to all concerns, seeking guidance when appropriate from colleagues in the Local Authority.

Designated Lead

Mrs A Tumelty, Assistant Headteacher

Deputy DSL

Miss H Jenkinson, Safeguarding Officer

Deputy DSL

Mrs C Myers, Safeguarding Officer

## 2. INTRODUCTION

- 2.1 This policy has been supported by adopting the principles established by the Education Act 2002, and '**Keeping Children Safe in Education**' September 2025. ([Keeping children safe in education](https://www.gov.uk/government/uploads/system/uploads/attachment_data/file/94491/Keeping_Children_Safe_in_Education_September_2025.pdf) - GOV.UK ([www.gov.uk](https://www.gov.uk))). (See ADDEMDUM 1 for Summary of KCSIE 2025 updates – page 16).
- 2.2 The governing body takes seriously its responsibility under Section 175 of the Education Act 2002 to safeguard and promote the welfare of children; and to work together with other agencies to ensure adequate arrangements within our academy to identify, assess, and support those children who are suffering harm or are at risk of harm.
- 2.3 We recognise that all adults, including temporary staff, volunteers and governors, have a full and active part to play in protecting our students from harm, and that all students' welfare is our paramount concern.
- 2.4 All staff believe that our school should provide a caring, positive safe and stimulating environment that promotes the social, physical, emotional and moral development of the individual child.

## 2.5 The aims of this policy are:

- 2.5.1 To support the student's development in ways that will foster security, confidence and independence.
- 2.5.2 To provide an environment in which students feel safe, secure, valued and respected, and are confident in approaching adults in school if they are experiencing difficulties, knowing that they will be listened to and their concerns taken seriously.
- 2.5.3 To ensure all teaching and non-teaching staff are aware of the importance of safeguarding children and of their own responsibilities in identifying and reporting possible cases of abuse.
- 2.5.4 To provide a systematic means of monitoring students known, or thought to be at risk of harm, and ensure the academy contribute to assessments of need and support packages for those students. Senior Leadership oversight occurs at least termly.
- 2.5.5 To emphasise the need for good levels of communication between all members of staff. Regular reviews of 'At Risk' students or borderline cases are held with Head of Year.
- 2.5.6 To develop a structured procedure within the academy which will be followed by all members of the academy in cases of suspected abuse. Safeguarding Lead/Deputy Safeguarding Leads are visible and accessible to all academy members.
- 2.5.7 To develop and promote effective working relationships with other agencies, especially the Police and Social Care. Macmillan Academy welcome visitors into the academy to help ensure welfare of all students.
- 2.5.8 To ensure that all staff working within our academy who have substantial access to children have been checked as to their suitability, including verification of their identity, qualifications, and a satisfactory Disclosure and Barring Service (DBS) check (according to statutory guidance) and a central record is kept for audit. (Referenced with KCSIE Part 3).

## 3. EQUALITY STATEMENT

- 3.1 Some children are at an increased risk of abuse, and additional barriers can exist for some children with respect to recognising or disclosing it. We are committed to anti discriminatory practice and recognise children's diverse circumstances. We ensure that all children have the same protection, regardless of any barriers they may face. Wherever possible children are offered specialist support to ensure "their voice" is captured. Wherever the word "staff" is used, it covers ALL staff on site, including ancillary, supply and self-employed staff, contractors, volunteers working with children and governors. We give special consideration to children who:
  - 3.1.1 Have special educational needs or disabilities.
  - 3.1.2 Are young carers.
  - 3.1.3 May experience discrimination due to their race, religion, sexual identification or gender.
  - 3.1.4 Have English as an additional language.

- 3.1.5 Are known to be living in difficult situations – for example, temporary accommodation or where there are issues such as substance abuse or domestic violence.
- 3.1.6 Are at risk of FGM, sexual exploitation, forced marriage, or radicalisation.
- 3.1.7 Are asylum seekers
- 3.1.8 Children who experience mental health difficulties (reference policy) and promoting children and young peoples' mental health and wellbeing, 2015.

#### **4. LEGISLATION AND STATUTORY GUIDANCE**

- 4.1 This policy is based on the Department for Education's statutory guidance, [Keeping Children Safe in Education \(2025\)](#) and [Working Together to Safeguard Children \(2018\)](#), [Sexual violence and sexual harassment between children in schools and colleges \(2021\)](#) and the [Governance Handbook \(2020\)](#). We comply with this guidance and the procedures set out by our local safeguarding children board.
- 4.2 This policy is also based on the following legislation:
  - 4.2.1 [The Children Act 1989](#) (and [2004 amendment](#)), which provides a framework for the care and protection of children.
  - 4.2.2 Section 5B(11) of the Female Genital Mutilation Act 2003, as inserted by section 74 of the [Serious Crime Act 2015](#), which places a statutory duty on teachers to report to the police where they discover that female genital mutilation (FGM) appears to have been carried out on a girl under 18.
  - 4.2.3 [Statutory guidance on FGM \(2019\)](#), which sets out responsibilities with regards to safeguarding and supporting girls affected by FGM.
  - 4.2.4 [The Rehabilitation of Offenders Act 1974](#), which outlines when people with criminal convictions can work with children
  - 4.2.5 Schedule 4 of the [Safeguarding Vulnerable Groups Act 2006](#), which defines what 'regulated activity' is in relation to children.
  - 4.2.6 Statutory [Guidance on the Prevent duty \(2015\)](#), which explains schools' duties under the Counterterrorism and Security Act 2015 with respect to protecting people from the risk of radicalisation and extremism.

This policy also complies with our funding agreement and articles of association and refers to the locally agreed inter-agency procedures set by [Tees Local Safeguarding Children Boards' Procedures](#) ([www.middlesbrough.gov.uk](http://www.middlesbrough.gov.uk)).

#### **5. SAFE SCHOOL, SAFE STAFF**

We will ensure that:

- 5.1 All members of the governing body understand and fulfil their responsibilities, namely to ensure that:
  - 5.1.1 There is a child protection policy together with a code of conduct policy (reference Staff Code of Conduct).

- 5.1.2 The academy operates safer recruitment procedures by ensuring that there is at least one person on every recruitment panel that has completed Safer Recruitment training (KCSIE 2025: Part three). The academy also ensures that candidates are aware that there may be online searches conducted as part of pre-employment checks (KCSIE 2025: Part three).
- 5.1.3 The academy has procedures for dealing with allegations of abuse made against staff and volunteers, and to make a referral to the DBS if a person in regulated activity has been dismissed or removed due to safeguarding concerns, or would have had they not resigned. (KCSIE 2025: Part four)
- 5.1.4 A senior Safeguarding Lead maintains responsibility.
- 5.1.5 All other staff have safeguarding training updated at least yearly.
- 5.1.6 Any weaknesses in child protection processes are remedied immediately.
- 5.1.7 Child protection policies and procedures are reviewed annually and that the child protection policy is available on the academy website and by contacting the academy.
- 5.1.8 The governing body considers how children may be taught about safeguarding. This may be part of a broad and balanced curriculum covering relevant issues through personal social health and economic education (PSHE) and/or relationship and sex education (RSE). This also includes an academy broadcast so that students are familiar with the academy's safeguarding team.
- 5.1.9 That enhanced DBS checks are in place for the Chair of Governors.
- 5.2 All members of staff and volunteers are provided with child protection awareness information at induction so that they know who to discuss a concern with. Supply staff are provided with safeguarding information upon arrival at the academy, each day.
- 5.3 All members of staff are trained in and receive regular updates in e-safety and reporting concerns.
- 5.4 All other staff and governors have child protection awareness training, updated by safeguarding colleagues as appropriate, to maintain their understanding of the signs and indicators of abuse.
- 5.5 All members of staff, volunteers, and governors know how to respond to a student who discloses abuse.
- 5.6 We will ensure that child protection concerns or allegations against adults working in the school are referred to the LADO for advice, and that any member of staff found not suitable to work with children will be notified to the DBS for consideration for barring, following resignation, dismissal, or when we cease to use their service as a result of a substantiated allegation, in the case of a volunteer.
- 5.7 Our procedures will be regularly reviewed and updated.
- 5.8 The name of the designated members of staff for child protection will be clearly advertised in the academy, with a statement explaining the academy's role in referring and monitoring cases of suspected abuse.

- 5.9 All new members of staff will be given access to a copy of our child protection policy, with the Senior Safeguarding Staff names clearly displayed, as part of their induction into the academy.
- 5.10 The policy is available publicly on the academy website. Parents/carers are made aware of this policy and their entitlement to have a copy of it via the academy website.

## **6. RESPONSIBILITIES**

6.1 The Safeguarding Lead is responsible for ensuring that the following is maintained:

- 6.1.1 Referring a child if there are concerns about possible abuse, to the local authority, and acting as a focal point for staff to discuss concerns. Referrals will be followed up in writing using the (Addendum 2) Safer Referral Form after an initial telephone call to children's services. This form will be completed immediately following contact with the local authority. Following referral, the academy will ensure feedback is received from the local authority within 24 hours of a referral being completed (Addendum 3). All potential outcomes are available for review (please see Addendum 3).
- 6.1.2 Keeping written records of concerns about a student even if there is no need to make an immediate referral and that when threshold for safer referral is not met, other pathways are considered, e.g. My Family Plan/Early Help Support (Addendum 4).
- 6.1.3 Ensuring that all such records are kept confidentially and securely and are separate from student records, until the person's 25<sup>th</sup> birthday, and a copy is forwarded to the student's next school or college.
- 6.1.4 Ensuring that an indication of the existence of the additional file (CPOMS), is accessible by relevant individuals.
- 6.1.5 Liaising with other agencies and professionals.
- 6.1.6 Ensuring that the appropriate person attends case conferences, core groups, or other multiagency planning meetings, contributes to assessments, and provides a report which has been shared with the parents.
- 6.1.7 Ensuring that any student currently with a child protection plan who is absent in the educational setting without explanation is referred to their key worker's Social Care Team.
- 6.1.8 Organising child protection induction, and update relevant training at least every 3 years, for all school staff.
- 6.1.9 Providing, with the Headteacher, an annual report for the governing body, detailing any changes to the policy and procedures; training undertaken, number and type of incidents/cases, and number of students subject to child protection plans (anonymised).



## **7. SUPPORTING CHILDREN**

- 7.1 We recognise that a student who is abused or is a witness to violence may feel helpless and humiliated, may blame themselves, and find it difficult to develop and maintain a sense of self-worth.
- 7.2 We recognise that the academy may provide the only stability in the lives of students who have been abused or who are at risk of harm.
- 7.3 We accept that research shows that the behaviour of a student in these circumstances may range from that which is perceived to be normal to aggressive or withdrawn.
- 7.4 We will support all students by:
  - 7.4.1 Teach and model expected behaviour and positive relationships.
  - 7.4.2 Encouraging self-esteem and self-assertiveness, through the curriculum as well as our relationships, whilst not condoning aggression or bullying.  
Promoting a caring, safe and positive environment within the academy, while maintaining the boundaries of acceptable conduct.
  - 7.4.3 Liaising and working together with all other support services and those agencies involved in the safeguarding of children.
  - 7.4.4 Notifying social care as soon as there is a significant concern (Addendum 2).
  - 7.4.5 Providing continued support to a student about whom there have been concerns should he/she leave the academy; appropriate information, including medical records will be copied under confidential cover to the student's new setting as a priority.
  - 7.4.6 Understand that a student may not be ready to make a full disclosure.
  - 7.4.7 No member of staff will promise a student confidentiality.
- 7.5 Early Help - We support children and their families by offering Early Help Support. The assistance is offered if a family requests this provision or professionals feel this is as a positive source of help when children and their families are in need. The family must consent to the referral, school staff play an active role in ensuring provision and assistance is delivered.

### **7.5.1 Addendum 4 – Early Help Referral Form**

Please note that families at Macmillan Academy are encouraged to liaise directly with members of Middlesbrough Multi-Agency Children's Hub (MACH) to discuss worries. (Telephone: 01642 726004 – 8.30am-4.00pm, Monday-Friday).

## **8. DEFINITIONS**

- 8.1 Safeguarding and promoting the welfare of children means:
  - 8.1.1 Protecting children from maltreatment (recognising that this can stem from both action and inaction on the part of the child's carer).
  - 8.1.2 Preventing impairment of children's physical and mental health/development.
  - 8.1.3 Ensuring that children grow up in circumstances consistent with the provision of safe and effective care.

8.1.4 Taking action when appropriate to enable all children to have the best outcomes.

- 8.2 Child protection refers to activities undertaken to prevent children suffering, or being likely to suffer, significant harm.
- 8.3 Abuse is a form of maltreatment of a child and may involve inflicting harm or failing to act to prevent harm. This also includes peer on peer abuse.
- 8.4 Neglect is a form of abuse and is the persistent failure to meet a child's basic physical and/or psychological needs, likely to result in the serious impairment of the child's health or development.
- 8.5 Children includes everyone under the age of 18 years.

## **9. CONFIDENTIALITY**

- 9.1 We recognise that all matters relating to child protection are confidential.
- 9.2 The Headteacher or safeguarding leads will disclose any information about a student to other members of staff on a 'need to know' basis only. Disclosure will be made to ensure ongoing close monitoring and support for the child.
- 9.3 All staff must be aware that they have a professional responsibility to share information with other agencies in order to safeguard children.
- 9.4 All staff are aware that they cannot promise a student confidentiality. Children are offered additional support when appropriate to assist with distress.
- 9.5 The academy will always undertake to share our intention to refer a student to social care with parents/carers, unless to do so could put the student at greater risk of harm or impede a criminal investigation. If in doubt, we will consult with the LADO or MACH, on this point.

## **PROCEDURES TO FOLLOW IN THE CASE OF SUSPICIOUS ALLEGATIONS AND STAFF MAKING REFERRALS (including children at risk of being drawn into terrorism)**

Anyone (not only education staff) can make a referral.

If the allegation involves a member of staff (in any context, including volunteers, procedures below should be followed:

### **Addendum 2 - Tees Multi Agency Safer Referral Form**

- 10.1 Senior Management must be informed immediately, or in their absence the Chair of Governors, and keep a detailed written and dated record of the event. Staff should be reassured that they have immunity from 'whistleblowing' in good faith, (please refer to **Whistleblowing Policy**). Senior Lead must not undertake their own investigation prior to consultation with the LADO or the Police (in most serious cases), which must be, within 24 hours, one working day, of the allegation being received or suspicion reported. This will be without telling the subject of the allegation or suspicion. This process should avoid all unnecessary delays. In borderline cases or if the Senior Lead/Chair of Governors have any doubts about their decision to report, discussions with the LADO can be held

informally and without naming the school or individual. (Safer Recruitment Policy, Staff Conduct/Tech Policy).

- 10.2 An allegation about a member of staff by a student should be communicated directly to the academy's DSL. An allegation about the DSL must be reported to the Headteacher. An allegation about the Headteacher must be reported to the CEO of Endeavour Academies Trust. An allegation about the CEO must be reported to the LADO. If the allegation involves the Chair of Governors, then the allegation should be referred directly to the LADO.
- 10.3 Immediate contact should be made with the LADO to discuss the allegation, consider the nature, content and context of the allegation and agree a course of action including any involvement of the police. Discussions should be recorded in writing, and communication with both the individual and parents of the child/children agreed. The School must consider carefully whether the circumstances of the case warrant suspension of the member of staff or whether alternative arrangements should be put in place. The School will give due weight to the views of the LADO and this policy when making a decision about this.
- 10.4 The following definitions should be used when determining the outcome of allegation investigations:
  - 10.4.1 Substantiated: there is sufficient evidence to prove the allegation;
  - 10.4.2 Malicious: there is sufficient evidence to disprove the allegation and there has been a deliberate act to deceive;
  - 10.4.3 False: there is sufficient evidence to disprove the allegation;
  - 10.4.4 Unsubstantiated: there is insufficient evidence to either prove or disprove the allegation. The term, therefore, does not imply guilt or innocence;
  - 10.4.5 Unfounded: to reflect cases where there is no evidence or proper basis which supports the allegation being made.
- 10.5 Since 1st October 2012, there are restrictions on the reporting or publishing of allegations against teachers. The school will make every effort to maintain confidentiality and guard against unwanted publicity. This restriction will apply to the point where the accused person is charged with an offence, or the DfE/TRA publishes information about the investigation or decision of a disciplinary case.
- 10.6 Staff need to be supported to challenge decisions by other agencies; therefore, staff will be supported to follow through their concerns in respect of safeguarding children. Staff will be empowered to discuss matters with their managers and positively challenge other agencies to improve safeguarding arrangements for children and young people. When appropriate the Macmillan Senior Leadership Team will liaise with managers from outside agencies. Whistleblowing Procedures are relayed to all staff on an annual basis through CPD.
- 10.7 If a member of staff has concerns about safeguarding practices in school:
  - 10.7.1 They should use procedures outlined in the Whistleblowing Policy.
  - 10.7.2 They may also seek advice from <https://www.gov.uk/whistleblowing>
  - 10.7.3 The NSPCC dedicated helpline is another useful resource (Tel 0800 028 0285 8am-8pm Mon-Fri or email [help@nspcc.org.uk](mailto:help@nspcc.org.uk)).

## **CHILD ON CHILD ABUSE (KCSIE: Part five, 2025)**

10.8 If the allegation of abuse is against another pupil(s) (Child on Child Abuse including Child on Child Violence and Sexual Harassment):

Child on Child abuse can result in significant harm and will always be taken seriously. It must not be contextualised, minimised or dismissed as 'normal growing up behaviour'. As such any report of Child on Child abuse must be acted upon using the school/local safeguarding policy/procedures and behaviour management guidelines. Child on Child abuse includes, but is not limited to:

- 10.8.1 Physical and sexual abuse
- 10.8.2 Sexual harassment and violence
- 10.8.3 Emotional harm
- 10.8.4 On and offline bullying
- 10.8.5 Teenage relationship abuse

It can even include grooming children for sexual and criminal exploitation.

Other forms include:

- 10.8.6 Up skirting (taking a picture under a person's clothing without their knowledge with a view to obtaining sexual gratification or causing the victim humiliation, distress or alarm).
- 10.8.7 Sexting (youth produced sexual imagery) (Tech Policy).
- 10.8.8 Pulling items of clothing up/down or to cause exposure.

On Child on Child sexual violence and harassment we will:

- 10.8.9 Make clear that sexual violence and sexual harassment is not acceptable, will never be tolerated and is not an inevitable part of growing up.
- 10.8.10 Not tolerate or dismiss sexual violence and sexual harassment as 'banter', 'part of growing up', 'just having a laugh' or 'boys being boys'.
- 10.8.11 Challenge behaviour (potentially criminal in nature), such as grabbing bottoms, breasts and genitalia, pulling down trousers, flicking bras.
- 10.8.12 Never diminish or normalise sexually abusive behaviour, including sexually abusive language.
- 10.8.13 This is why a strenuous, whole school approach (especially preventative education) is important.
- 10.8.14 Ensure that the school's initial response to a report from a child is important. It is essential that all victims are reassured that they are being taken seriously and that they will be supported and kept safe. A victim will never be given the impression that they are creating a problem by reporting sexual violence or sexual harassment. Nor will a victim ever be made to feel ashamed for making a report.
- 10.8.15 Respond assertively to any reports or disclosures in line with this policy and will defer to the Designated Safeguarding Lead or their Deputies. (KCSIE: Part five, 2023)

10.9 The Threshold for referrals:

- 10.9.1 Guidance places responsibility of making decisions about referrals on MACH and safeguarding staff within the academy. Borderline cases should be referred in line and with informal advice from the LSCB (LADO and Children's Hub) Guidance notes in KCSIE outline the importance of children receiving the right help at the right

time to address risks and prevent issues escalating. It also refers to the importance of acting on early information and referring early signs of abuse, neglect and radicalisation, keeping clear records, listening to views of the child, reassessing concerns when situations do not improve, sharing information quickly and challenging inaction. Any member of staff can and should, make a referral for reconsideration if they feel the child's situation does not appear to be improving.

10.9.2 A failure to report externally by a school must be investigated by the local authority and, if justified, appropriate action taken (such action to be determined according to the legal framework).

10.9.3 A failure to report internally by staff must be investigated by the school and, if justified, appropriate action taken (this could range from disciplinary proceedings, a referral to the Teaching Regulation Agency or a referral to the Disclosure and Barring Service).

## **11. PROCEDURES TO FOLLOW IN THE CASE OF A DISCLOSURE:**

### **LISTENING TO CHILDREN**

- 11.1 Children who disclose to a teacher (or other member of staff) that they are victims of abuse must be listened to and heard, whatever form their attempts to communicate their worries take.
- 11.2 When recording an allegation or description of an incident, close adherence to the following points is crucial at all stages of an investigation, whoever undertakes this. At no point in the recording should a pupil be promised secrecy or confidentiality, either by implication or statement. The child should be reassured that the matter will be disclosed only to people who need to know about it. The support needs of a child who express concerns about significant harm should be considered and met, utilising resources within and/or beyond the school as necessary. This is in accordance with the local procedures agreed with Middlesbrough Council and the Middlesbrough Children's Hub. Account should be taken of the age and understanding of the child and whether the child or other children may be at risk of significant harm.
- 11.3 Make timed and dated notes at the time of disclosure, these should then be discussed with Safeguarding Lead and uploaded to CPOMS.
  - 11.3.1 It should be factual.
  - 11.3.2 It should not include personal comment or opinion;
  - 11.3.3 It should include a verbatim account of anything said by the child
  - 11.3.4 It should include any relevant background information (including dates, times, places, who was present etc.)
  - 11.3.5 It should not include any leading questions.
  - 11.3.6 It should reflect that the child is being listened to, not interviewed. This includes not suggesting that there are alternative explanations for their concerns or worries.
  - 11.3.7 The child should not be interrupted when recalling significant events.
  - 11.3.8 Care should be taken that assumptions are not made about what the child is saying, and in not seeking to make interpretations. Clarifying questions should be

asked at the end of the disclosure to ensure that the information is as accurate as possible.

In addition:

- 11.3.9 Do not discuss the matter with parents/carers or the person accused of the abuse.
  - 11.3.10 Do not discuss the matter with other staff members other than DSL / DDSLs.
  - 11.3.11 The written record should be signed and dated by the person who received them and uploaded to CPOMS.
  - 11.3.12 All subsequent actions should be recorded to CPOMS.
- 11.4 In the case of pupils identified as being at risk of radicalisation, Macmillan Academy will consider the level of risk to identify the most appropriate referral. This could include Channel or Children's Social Care, e.g. Middlesbrough Children's Hub
- 11.5 Although decisions to seek support for a child in need, or about whom there are concerns relating to radicalisation, would normally be taken in consultation with parent(s) and pupil, their consent is not required for a referral when there are reasonable grounds to believe a child is at risk of significant harm.
- 11.6 In the case of FGM, from October 2015, it is mandatory for teachers to report to the police cases where they discover that an act of FGM appears to have been carried out or believe this is about to be carried out. Unless the teacher has good reason not to, they should still consider and discuss such a case with the DSL and involve children's social care as appropriate. Further information can be found in Female Genital Mutilation Guidance for Schools (June 2019).

## **12. PREVENT STRATEGY**

- 12.1 In addition to the procedures already covered in this policy in relation to protecting children from radicalisation and being drawn into terrorism, there are additional safeguards and procedures in place to safeguard children.
- 12.1.1 All visiting speakers, whether invited by staff or pupils, are suitably and appropriately supervised throughout their visit.
  - 12.1.2 The School also has suitable levels of filtering and network monitoring to ensure that pupils are safe from terrorist and extremist materials.  
Regular checks are made on pupils' personal devices to ensure they do not use VPN's and this is reinforced in assemblies, PSHE, parental meetings and School correspondence.
  - 12.1.3 Act Early and Prevent Radicalisation is signposted on the academy's website for parents/carers to access information and/or to make a referral.

## **13. STAFF ACTIONS TO KEEP ALL STUDENTS AND STAFF SAFE**

- 13.1 Staff have the power to use reasonable force (see DfE Use of reasonable force 2013) when a student is:
- Committing a criminal offence (including behaving in a way that would be an offence if the student were not under the age of criminal responsibility)

- Injuring themselves or others
  - Causing damage to property (including the students' own property)
  - Engaging in any behaviour prejudicial to maintaining good order and discipline at the academy or among any of its students, whether the behaviour occurs in a classroom during a teaching session or elsewhere
  - Staff may also use reasonable force when conducting a search for prohibited items (in line with the DfE Use of reasonable force 2013).
- 13.2 Mobile phones, smart watches, any form of camera and audio equipment are not to be seen at all on academy premises. If a member of staff sees any of these items, they will be confiscated and can be collected at the end of the academy day. Students are not permitted to bring more than one mobile phone on site.
- 13.3 Filming, taking pictures, or videos of staff within the school premises, and sharing those images or recordings is strictly prohibited. Posting pictures, videos or any type of recording of staff online without their consent violates their privacy and this behaviour policy. Any student found recording, taking pictures, or videos of staff without their consent may face severe consequences ranging from seclusion to permanent exclusion from the academy.
- 13.4 Whilst we would hope not to have to do this, senior members of staff can search students with consent for any item. Additionally, designated staff may search a student without consent for prohibited items including:
- Knives and weapons
  - Alcohol or drugs
  - Stolen items
  - Tobacco/E-cigarettes/vapes
  - Fireworks
  - Pornographic material
  - Any item likely to be used to commit an offence
  - Any item banned by the academy rules. The following items are banned:  
pressurised containers, drinks with high sugar content, spray deodorants, glass bottles and containers, sweets and unhealthy snacks.

Such events should be recorded and signed by a witness and passed to SLT. All searches carried out by staff members will also be recorded on the academy's safeguarding system with details of the reason for the search, the time it was conducted, the staff members present and whether any prohibited items were found.

## **14. ANTI-BULLYING**

- 14.1 The academy policy on anti-bullying is set out in a separate document and acknowledges that to allow or condone bullying may lead to consideration under child protection procedures. This includes all forms of bullying e.g. cyber, racist, homophobic and gender related bullying. A record is kept of all known bullying incidents. All staff are aware that students with Special Educational Needs & Disabilities (SEND) and/or differences/perceived differences are more susceptible to being bullied or victims of child abuse.

## **15. HEALTH & SAFETY**

- 15.1 The academy Health & Safety Policy, set out in a separate document, reflects the consideration we give to the protection of our students both physically within the school environment and when away from the academy undertaking academy trips and visits.

## **16. MONITORING AND EVALUATION**

17.1 The academy child protection and safeguarding policy and procedures will be monitored and evaluated by:

- 17.1.1 Governing Body visits to the school
- 17.1.2 SLT 'MBWA' and discussions with students and staff
- 17.1.3 Student Voice (survey)
- 17.1.4 Scrutiny of attendance data
- 17.1.5 Scrutiny of range of risk assessments
- 17.1.6 Scrutiny of Executive/SLT/Governing Body minutes
- 17.1.7 Logs of bullying/racist/behaviour incidents for SLT and governing body to monitor
- 17.1.8 Review of parental concerns and parent questionnaires.

## **ADDENDUM 1**

### **Summary of changes: Keeping Children Safe in Education 2025**

There are a number of changes to Keeping Children Safe in Education (KCSIE) this year, all of which apply from 1 September 2025. A table of substantive changes can be found in Annex F of KCSIE 2025, which are not repeated in full below.

- Summary About the guidance (no changes made)
- Part one Safeguarding information for all staff (no changes made)
- Part two - The management of safeguarding
  - Page 36 Para 128 - We have added a note to say that we expect to publish revised guidance on Relationships, Sex, and Health Education this summer. If published, we will signpost to this guidance in September 2025.
  - Page 38 Para 135 - Updated to clarify misinformation, disinformation and conspiracy theories are safeguarding harms.
  - Page 40 Para 142 - Link added to the plan technology for your school service, which schools can use to assess themselves against the filtering and monitoring standards and receive personalised recommendations on how to meet them.



- Page 41 Para 143 - Link added to DfE guidance on the use of generative AI in education (2025) at end of filtering and monitoring (FM) section to support schools and colleges.
- Para 144 - wording amended in the cybersecurity standards for schools and colleges advice to clarify that it was developed to help schools improve their cyber resilience.
- Page 47 Para 169 - 170 information added that clarifies and reflects existing AP Guidance
- Page 49 Para 177 - updated to clarify 'working together to safeguard attendance' 'is now 'statutory' guidance.
- Page 54 Para 199 - has been amended to clarify that the role of the virtual head has been extended to include responsibility for promoting the educational achievement of children in kinship care.
- Page 56 Para 204 - We have added a note to say that we expect to publish the revised guidance on gender questioning children this summer. If published, we will signpost to this guidance in September 2025.
- Para 205 - removal of 'spectrum' and 'disorder' to align with

#### SEND code of practice.

- Part three Safer recruitment
  - Page 74 Para 260 - reference to TRA's Employer Access Service removed and replaced with new link to GOV.UK page.
  - Page 75 Para 266 - references to TRA's Employer Access Service removed and replaced with new link to GOV.UK page.
  - Page 85 Para 319 - reference to Employer Secure Access removed and replaced with link to GOV.UK for S128 checks.
  - Page 87 Para 331 - information added that clarifies and reflects existing AP Guidance.
- Part four Safeguarding concerns or allegations made about staff, including supply teachers, volunteers and contractors
  - Page 106 Para 422 - amended to correct the title of the Information Commissioner's employment practice guidance.
- Part five Child-on-child sexual violence and sexual harassment
  - Page 140 Para 545 - Link added to the Lucy Faithfull Foundation's 'Shore Space'. which offers a confidential chat service supporting young people concerned about their own or someone else's sexual thoughts and behaviours.
- Annexes A, B, C, D and E
  - Annex B - Page 157 Header removed

- Annex B – Page 163 Link added to the CSA Centre's Resources for education settings | CSA Centre.
- Annex B – Page 164 Link added to the Preventing Child Sexual Exploitation | The Children's Society.

## ADDENDUM 2

### TEES MULTI AGENCY SAFER REFERRAL FORM

#### SITUATION, ASSESSMENT, FAMILY, EXPECTED RESPONSE, RECORDING

**Children's Social Care operates a multi-agency approach to supporting children, young people and their families. Across the Tees Valley, County Durham and North Yorkshire Multi Agency Safeguarding Teams are in place working together to safeguard children. These teams include the Police, health services and other relevant agencies who share information and support the social care decision making process. All information shared is proportionate and appropriate to the level of need of the child. For the avoidance of doubt, information can and will be shared in these multi agency teams to get the right support to meet a child's needs at the right time. Children's Social Care operates within the context of Working Together to Safeguard Children and is GDPR and Data Protection ACT 2018 compliant.**

#### **When do you need to use this form?**

This form should be used to request support for a child who has suffered or is at risk of suffering significant harm; where you believe they are unlikely to achieve or maintain a reasonable level of health or development without the provision of a social work service. This is Level 4 of need.

#### **What do you need to do?**

- Discuss your concerns with the child and family if appropriate and where you can, gain their consent.
- Where you are able, reflect on the right support at the right time with your agency's safeguarding lead to determine that a request for a social work service is the most appropriate response for the child.

**What is the level of need? (To ascertain the level of need based upon the information you have, consult your threshold document at: <https://www.teescpp.org.uk/safeguarding-procedures/2-early-help/>)**

Level of Need	Level description / response	Referral Pathway
<b>1</b>	A child whose needs are being met, or whose needs can be met by universal services	<b>Universal Services</b>
<b>2</b>	A child with additional needs that can be met by a single agency providing additional support or by signposting to an additional agency – complete an early help assessment (EHA) ( <a href="https://www.teescpp.org.uk/safeguardingprocedures/2-early-help/">https://www.teescpp.org.uk/safeguardingprocedures/2-early-help/</a> )	<b>Early Help</b>
<b>3</b>	A child who would benefit from a coordinated response from multiple agencies – complete an Early Help Assessment (EHA)	<b>Early Help</b>

<b>4</b>	A child who has suffered or is at risk of suffering significant harm or has complex needs; that requires a specialist or statutory intervention	<b>Children's Social Care</b>
----------	-------------------------------------------------------------------------------------------------------------------------------------------------	-------------------------------

### Request for Children's Social Care

<b>Date of Request:</b>		<b>Time:</b>	
-------------------------	--	--------------	--

### DETAILS OF CHILD(REN)

<b>Child's name:</b>		<b>DOB:</b>		<b>Expected Date of Delivery (Unborn):</b>	
		<b>NHS no/UPN (if available)</b>			
		<b>Age:</b>		<b>Language:</b>	
<b>Gender M/F :</b>		<b>Ethnicity:</b>		<b>Interpreter required:</b>	
		<b>Religion:</b>		<b>Communication Needs:</b>	

<b>Address:</b>	
-----------------	--

<b>Postcode:</b>		<b>Tel No of Parent/ Carer: (MUST COMPLETE )</b>		<b>Disability:</b>	<b>Y/N</b>

<b>Name of Parent(s) / Carer(s):</b>		<b>Address of Parent(s) / Carer(s):</b>		<b>Relationship and DOB:</b>	

### Family Composition/Significant Others (Who else lives with the child or plays a significant role in their life?)

<b>Name:</b>	<b>DOB:</b>	<b>Relationship:</b>	<b>Address (and contact number):</b>

### CONSENT

**Professionals should seek to discuss concerns with the family and where possible seek the family's agreement in making a referral unless this may place the child at increased risk of significant harm.**

Who has parental responsibility for this child?

Have parents / carer(s) been informed of this referral? Yes ☐ No ☐

Have parents / carer (s) given consent for this referral? Yes ☐ No ☐

Has the child / young person given consent for this referral?

☐ No ☐ N/A ☐ Yes

If the answer to any of the above is **NO** please provide an explanation :

### WHAT IS WORKING WELL? (What support is currently in place)

- What existing support is in place/offered for this child and family? What is the impact on the child?

- What is your agency doing? What services will your agency continue to provide?
  - What are the strengths / protective factors?

### WHAT ARE YOU WORRIED ABOUT? (Reason for the referral: consult your threshold document)

- Is there actual harm – what is causing the harm? What is the impact?
- What are the future dangers for the child(ren) / family should this concern not be addressed?
- What are the complicating factors (E.g: parental substance misuse/ mental health issues) that make the concern more difficult to deal with?

**WHAT NEEDS TO HAPPEN NEXT? (What change do you want to see happen?)**

- What are the views of the children and family? What do they think will help them?
- What needs to change?
- What intervention do you think will make a difference for this child and family?
- What outcome do you hope this referral will achieve?
- Are there any issues for worker safety that need to be considered when planning a response?

**Details of other agencies involved with the child**

Agency		Agency	
Midwife		Other Health Professional	
Health Visitor		Child care or Education Setting	
School Nurse		Youth Justice / Offending	
GP		Other Agency	

**REFERRAL FROM:**

NAME	
JOB TITLE	
AGENCY	
ADDRESS	
TEL	
EMAIL	

**PLEASE SEND THE COMPLETED REQUEST TO:**

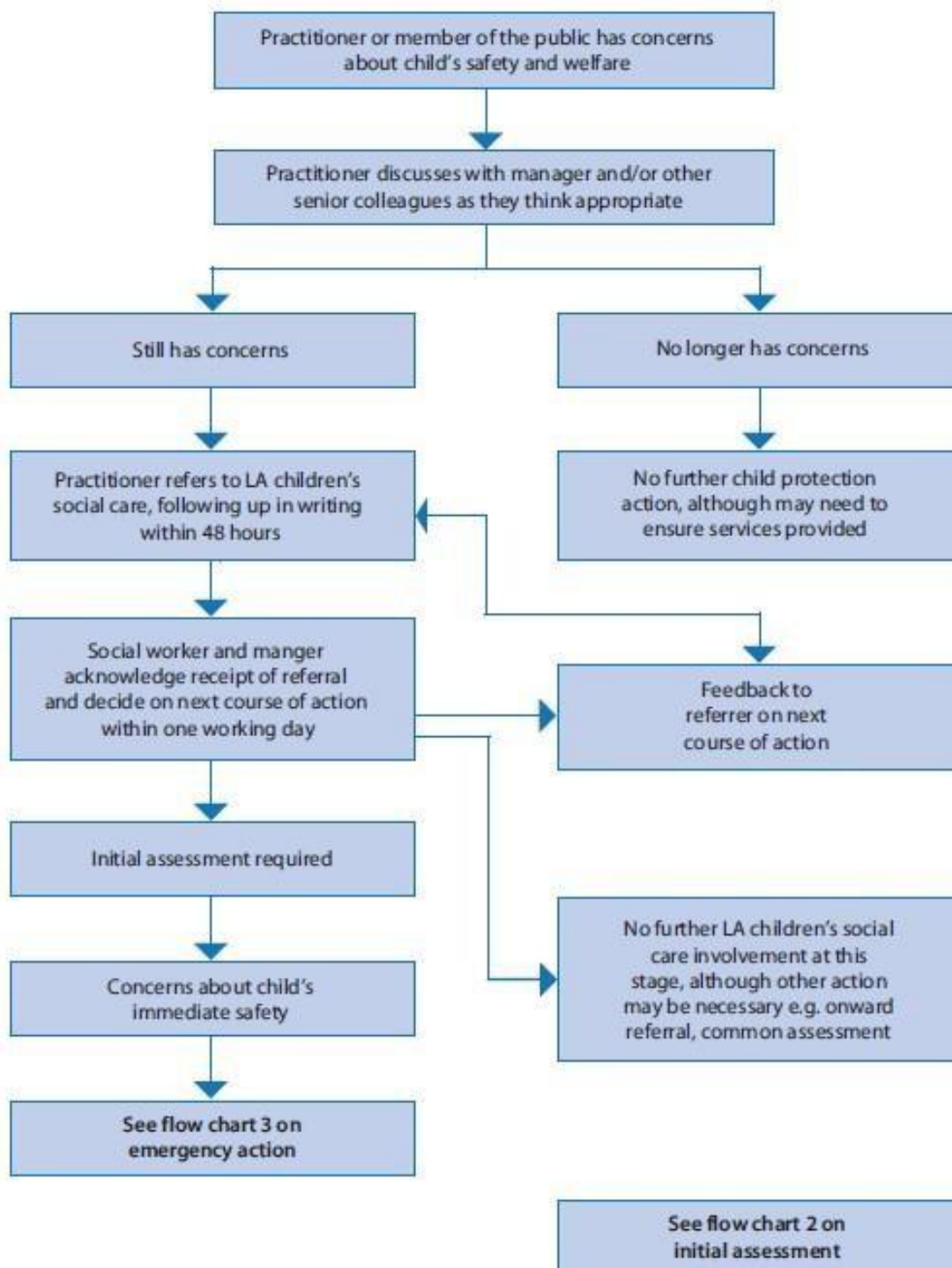
Children's Services	Office hour	Out of hours	Email
Hartlepool	01429 284284 01642 130080	01642 524552	<a href="mailto:childrenshub@hartlepool.gov.uk">childrenshub@hartlepool.gov.uk</a>
Middlesbrough	01642 726004	01642 524552	<a href="mailto:MiddlesbroughMACH@middlesbrough.gov.uk">MiddlesbroughMACH@middlesbrough.gov.uk</a>
Redcar & Cleveland	01642 130700	01642 524552	<a href="mailto:RedcarMACH@redcar-cleveland.gov.uk">RedcarMACH@redcar-cleveland.gov.uk</a>

Stockton-on-Tees	01642 130080 01429284284	01642 524552	<a href="mailto:childrenshub@hartlepool.gov.uk">childrenshub@hartlepool.gov.uk</a>
North Yorkshire	01609780780	01609780780	<a href="mailto:children&amp;families@northyorks.gov.uk">children&amp;families@northyorks.gov.uk</a>
Durham	03000 267979	03000 267979	<a href="mailto:Firstcontact@durham.gov.uk">Firstcontact@durham.gov.uk</a>
Darlington	01325 406252	01642 524552	<b>PLEASE NOTE:</b> This email address is for out of hours only and should only be used if contact cannot be made by telephone: <a href="mailto:childrenfrontdoor@darlington.gov.uk">childrenfrontdoor@darlington.gov.uk</a>

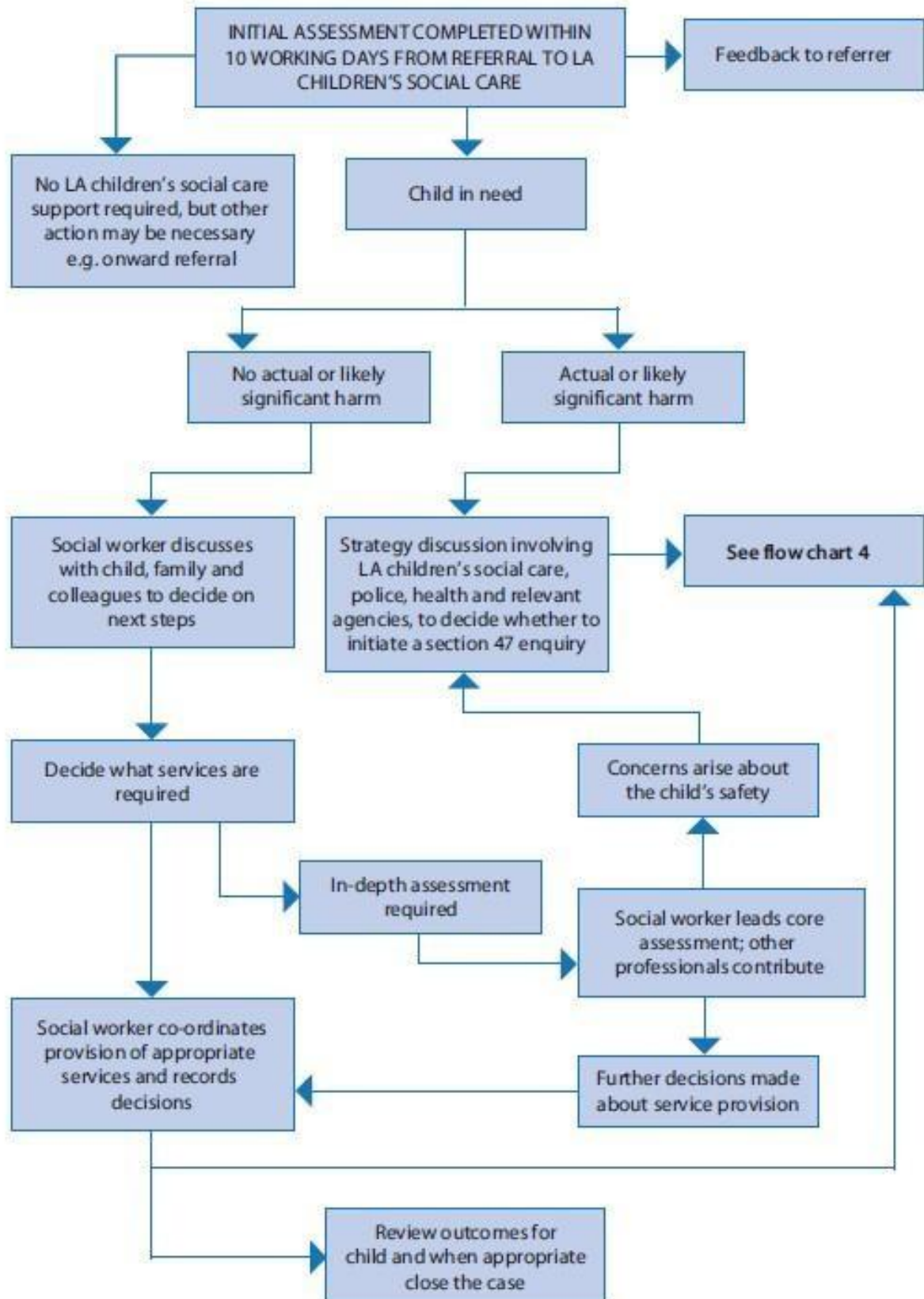
## ADDENDUM 3

186 Working Together to Safeguard Children

**Flow chart 1: Referral**

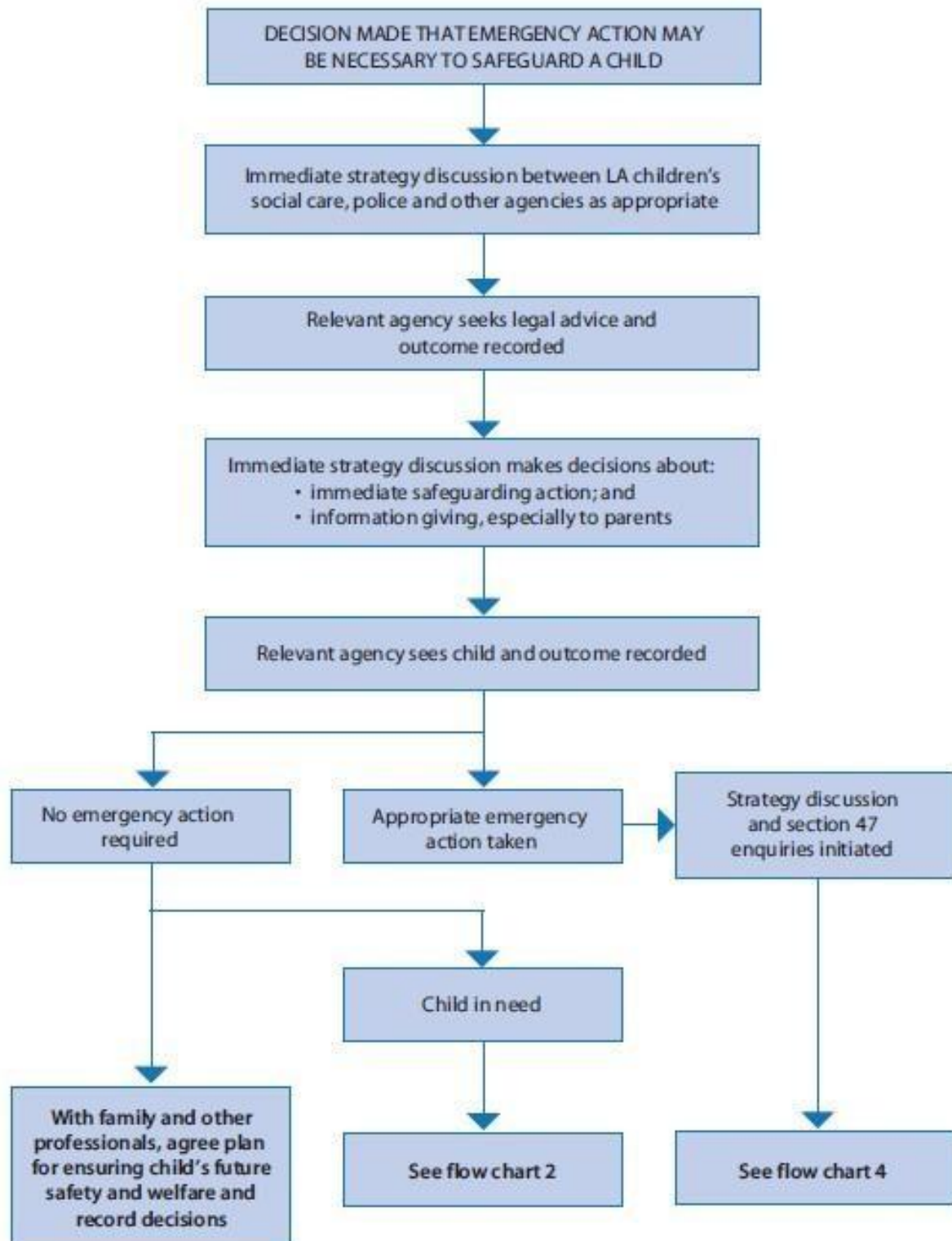


**Flow chart 2: What happens following initial assessment?**

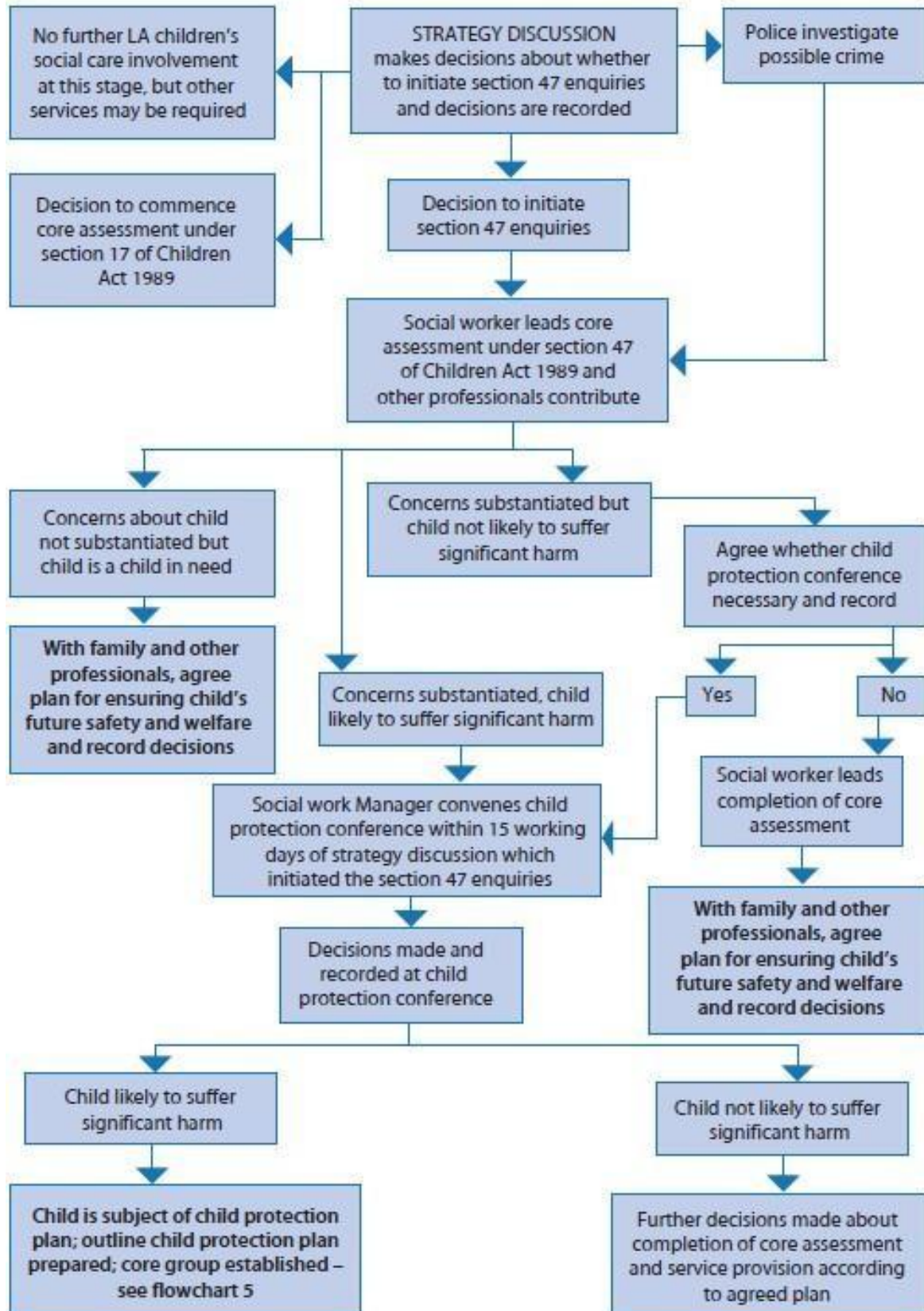




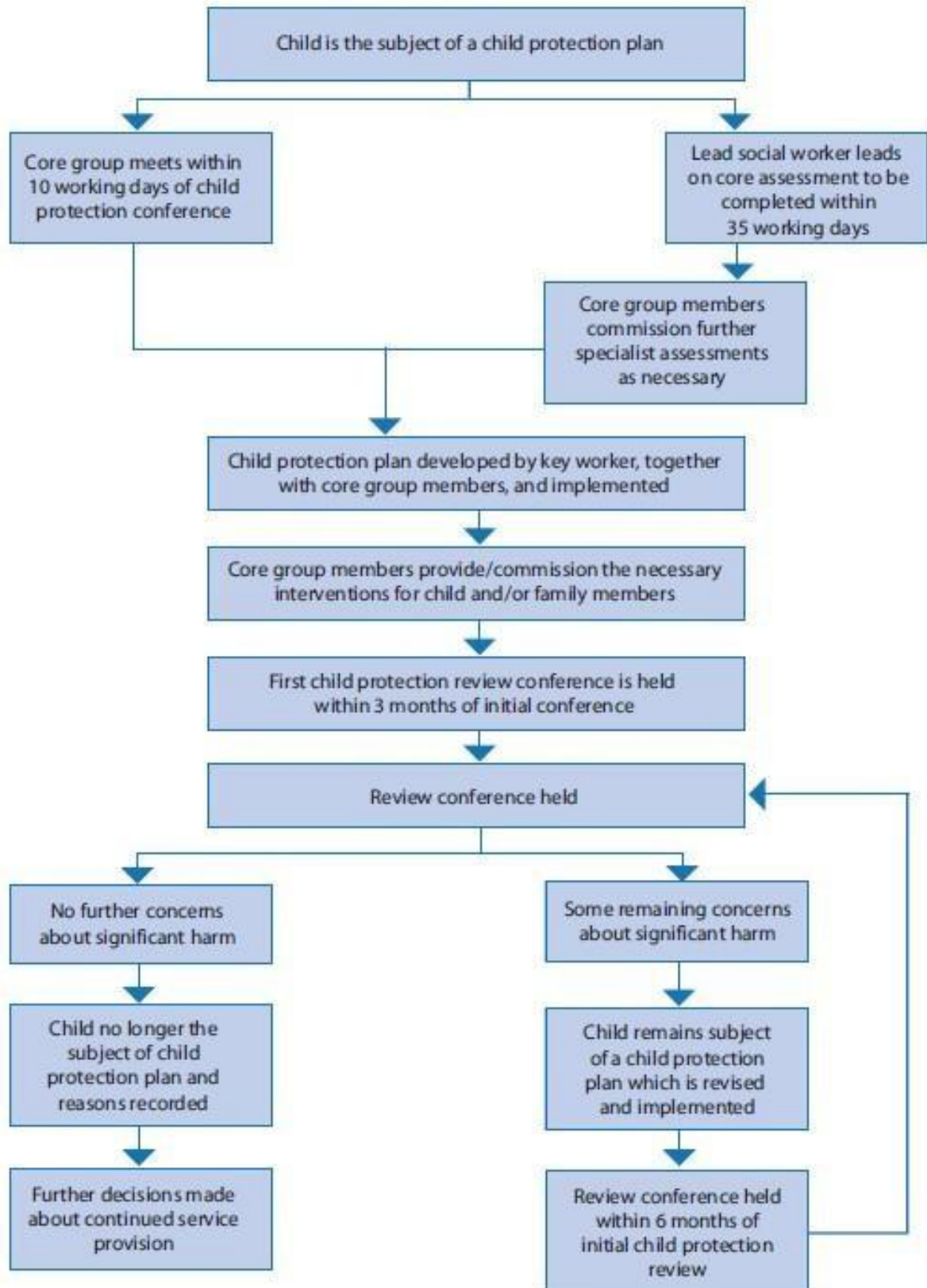
**Flow chart 3: Urgent action to safeguard children**



**Flow chart 4: What happens after the strategy discussion?**



**Flow chart 5: What happens after the child protection conference, including the review process?**



## **ADDENDUM 4**

### **Request for whole family support in Early Help**

To be returned to [middlesbroughMACH@middlesbrough.gov.uk](mailto:middlesbroughMACH@middlesbrough.gov.uk)

Please complete as much of this form as possible to help us fully understand the children's circumstances.  
Requests may be returned to the referrer asking for more information if key parts of the form are left blank.  
Please note that requests will only be accepted if the family have agreed to engage with support.

Date of request		Request received from	Choose an item.
-----------------	--	-----------------------	-----------------

#### **ABOUT YOU:**

Name		Role	Choose an item.
Address		Agency (if professional)	
Telephone number		Mobile	
Email			
Have the family agreed to engage with Early Help support?		Choose an item.	
We may want to contact you to discuss further, what is the preferred method of communication?			Choose an item.

#### **ABOUT THE FAMILY:**

Family member name	Relationship	DOB/EDD	Gender
			Choose an item.
			Choose an item.
			Choose an item.
			Choose an item.
			Choose an item.
			Choose an item.
Current address		Landline	
		Mobile	
Postcode		Email	
Does the child have a disability or additional needs?	Choose an item. If yes, please state		
Is the child a young carer?	Choose an item. If yes, to whom		
Are there any additional support needs for any family member? i.e. literacy, translator, access etc	Choose an item. If yes, please state		
Is the child aware you have made this request?		Choose an item.	Date

Is there a current Early Help Assessment for this family	Choose an item.	If yes please state date completed	
----------------------------------------------------------	-----------------	------------------------------------	--

**ARE THERE ANY PROFESSIONALS/AGENCIES WORKING WITH ANY FAMILY MEMBERS? (e.g. GP, Health Visitor, School, Nursery, Mental Health Service)**

Professional's name	Agency	Involvement

**What are the main issues for which you are requesting support? (Type X in the appropriate boxes)**

Alcohol misuse – adult		Family bereavement		Parenting support	
Alcohol misuse – child		Family relationships		Potential private fostering	
Anti-social behaviour		Financial issues		Risk taking behaviours	
Attendance issues		Housing issues		Self-esteem and confidence	
Child behaviour/routines and boundaries		Mental health – adult		Self-harm/Self-injury	
Child with SEN or disabilities		Mental health – child		Sexual identity/relationships – child	
Development delay		Missing from education		Social isolation	
Domestic abuse		Missing from home		Step down from Social Care	
Drug misuse – adult		Neglect/Suspected neglect		Unemployed/Workless-ness	
Drug misuse – child		Parental conflict		Young carer	
Education/Employment/Training		Parental illness			
Other, please state:					

**Brief description of current situation that has led to this request for support**



**What is working well?** Please describe:

**Existing wellbeing**

What actions have been taken by the parents, or others, in the past to make sure that the child has been kept safe and well? Who did this? How did they do this?

**Existing strengths**

What have people been doing to try and sort out the concerns? Who has been helping?

Please capture the parent/carer and young person's views and take into consideration any extended family support including neighbours and friends who may be helping too.

**What are you worried about?** Please describe:

**Wellbeing concerns**

What are the behaviours that you are worried about? When did it start? How often does it happen? What is the worst behaviour and how has it impacted on the child? **Complicating factors**

Who or what is making the problem harder to deal with e.g. poor parental mental health? What has happened?

Please capture the parent/carer and young person's views.

**Please also detail any known risks to staff working with the family**

**Critical worry statement**

Please try to write a statement outlining who is worried, what has happened to make them worried and what could happen if things don't change i.e. what are the future dangers for the child(ren) / family should this concern not be addressed? Please capture the parent/carer and young person's views.

**What needs to happen next?**

Please describe what change you want to see happen including changes in behaviour or actions you think are needed to address the worries and improve the wellbeing of the young person and family. What are the views of the children and family? What do they think will help them?

**Wellbeing goal**

Please try to write a statement outlining what you would like the day in the life of the young person and family to look like for us not to be worried. Please capture the parent/carer and young person's views.

**AGREEMENT TO ENGAGE AND YOUR PERSONAL DATA**

In agreeing to a referral for Early Help whole family support, you are aware that your information will be shared with and gathered from key partners such as health, police, education and other agencies in order to better understand the level of service required to meet the needs of your family circumstances. This includes a wide range of services which we have a public duty or legal obligation to provide. **By agreeing to this referral you also understand that someone will contact you to offer you further advice or support.**

In addition, some of your personal information will be stored securely by the appropriate local authority where staff will be able to access your data electronically. They will do this via a secure login to a shared database, for the purpose of supporting you and your family. Some data is shared nationally as part of the Troubled Families

Programme but it is anonymised to reduce the risk of individuals being identified and is only used for carrying out research for the National Impact Study by the Ministry of Housing, Communities and Local Government.

**Do you have safeguarding concerns about this child? If yes do not complete this form, you must contact Middlesbrough MACH on 01642 726004 or email a SAFER referral to: [middlesbroughMACH@middlesbrough.gov.uk](mailto:middlesbroughMACH@middlesbrough.gov.uk)**

**Annex Additions** KCSIE:

Part one





Stockton Road  
Middlesbrough  
TS5 4AG



01642 800800



[enquiries@endeavour-academies.org.uk](mailto:enquiries@endeavour-academies.org.uk)  
[www.endeavour-academies.org.uk](http://www.endeavour-academies.org.uk)